



Green Hope Elementary

Lisa Spalding, Principal
 2700 Louis Stephens Drive
 Cary, NC 27519
 (919) 388-5270

Grades K-5
 Regular School
 Traditional Calendar

Wake County Schools

HIGH STUDENT PERFORMANCE

Performance of Students in Each Grade on the ABCs End-of-Grade Tests

Percentage of Students' Scores At or Above Grade Level

	Grade 3		Grade 4		Grade 5		OVERALL	
	Reading	Math	Reading	Math	Reading	Math	Reading	Math
Our School	93.6	91.4	95.0	85.1	>95	93.6	>95	90.2
District	86.7	78.3	89.9	77.6	92.6	75.5	89.7	75.3
State	81.8	70.8	85.2	67.7	89.3	66.7	85.5	66.4

N/A = 5 or fewer students

Performance of Each Student Group on the ABCs End-of-Grade Tests

Percentage of Students, Grouped by Gender, Ethnicity, and Other Factors, Who Passed BOTH the Reading and Math Tests

	Male	Female	White	Black	Hispanic	Amer. Indian	Asian Pacific Islander	Multi-Racial	E.D.	N.E.D.	L.E.P.	Migrant Students	Students with Disabilities
Our School	88.1	89.5	91.6	47.2	>95	N/A	>95	88.0	48.6	92.3	N/A	N/A	71.4
# of tests taken	201	237	296	36	7	0	74	25	35	403	4	0	35
District	72.4	74.5	87.9	48.5	54.5	71.1	91.8	73.4	48.1	84.7	41.3	N/A	42.9
State	62.7	65.2	75.9	43.5	52.5	50.5	81.1	64.7	48.5	77.2	38.3	N/A	33.7

E.D. = Economically Disadvantaged
 N/A = 5 or fewer students

N.E.D. = Not Economically Disadvantaged

L.E.P. = Limited English Proficiency

Percentage of Students Promoted at Each Gateway

NC students are required to meet state-wide standards for promotion in grades 3, 5, and 8. These gateways are designed to ensure that students are working at grade level before being promoted to the next grade.

	GRADE 3	GRADE 5	GRADE 8
Our School	N/A	N/A	N/A
District	N/A	N/A	N/A
State	N/A	N/A	N/A

SCHOOL PROFILE

School Size

The total number of students in this school and the average number of students in schools with similar grade ranges at the district and state levels.

	OUR SCHOOL	DISTRICT	STATE
	857	676	510

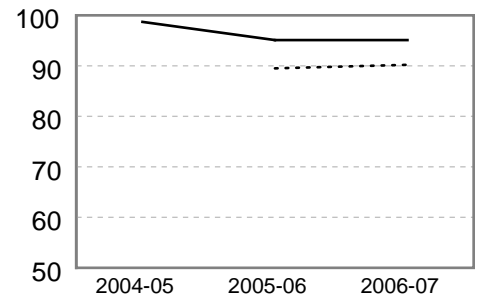
Average Class Size

The average number of students enrolled in a "typical" K-8 classroom.

	OUR SCHOOL	DISTRICT	STATE
Kindergarten	21	21	19
Grade 1	22	21	19
Grade 2	21	21	19
Grade 3	22	21	19
Grade 4	22	22	20
Grade 5	25	22	21

Three Year Trend of Student Performance on the ABCs End-of-Grade Reading and Math Tests

Percentage of students at or above grade level for the past three years.



— Reading - - - - Math
 * A multi-year trend for math is only available beginning in 2005-06 because of new tests based on the revised Standard Course of Study.

SAFE, ORDERLY AND CARING SCHOOLS

School Safety

The number of acts of crime or violence reported below includes all acts occurring in school, at a bus stop, on a school bus, on school grounds or during off-campus, school-sponsored activities.

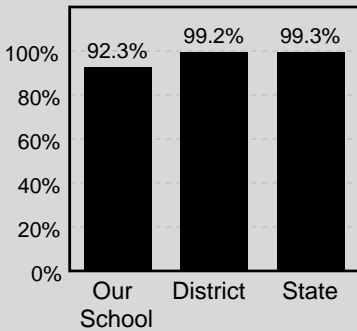
Out of 857 students in our school, there were a total of 0 act[s] of crime or violence.

The number of acts of crime or violence reported per 100 students:

OUR SCHOOL	0
DISTRICT	1
STATE	1

Access to Technology

Percentage of classrooms connected to the Internet



Keeping you informed

More information about your school is available on the NC School Report Cards Web site at: <http://www.ncreportcards.org>

HIGH STUDENT PERFORMANCE, CONTINUED

School Performance

Each year, schools in North Carolina may receive several designations based on their performance on the state's ABCs tests. These designations are awarded on the basis of the percentage of students performing at grade level and on whether students have learned as much as they are expected to learn in one year. The designations earned by your school are displayed below, followed by a brief description of each designation.

Our School's Designation(s): Honor School of Excellence, Expected Growth

DESIGNATION	PERFORMANCE: STUDENTS PERFORMING AT GRADE LEVEL	GROWTH: LEARNING ACHIEVED IN ONE YEAR			PERCENT OF SCHOOLS WITH DESIGNATION	
		High Growth	Expected Growth	Expected Growth Not Achieved	DISTRICT	STATE
HONOR SCHOOL OF EXCELLENCE	At least 90% of students at grade level and the school made adequate yearly progress (AYP)		✓		9	5
SCHOOL OF EXCELLENCE	At least 90% of students at grade level				1	0
SCHOOL OF DISTINCTION	At least 80% of students at grade level				44	24
SCHOOL OF PROGRESS	At least 60% of students at grade level				31	37
NO RECOGNITION	60 to 100% of students at grade level				14	22
PRIORITY SCHOOL	50 to 60% of students at grade level, OR Less than 50% of students at grade level				1	11
LOW PERFORMING	Less than 50% of students at grade level				0	1

Adequate Yearly Progress (AYP) Results

North Carolina has set target goals that schools must meet to make Adequate Yearly Progress (AYP) under the federal No Child Left Behind act.

Our school made adequate yearly progress.

Our school met 13 out of 13 AYP targets.

In any group where the percentage of students at a grade level is greater than 95% or less than 5%, the actual values may not be displayed because of federal privacy regulations. In these cases the results will be shown as >95% or <5% for the group.

QUALITY TEACHERS

	Total Number of Classroom Teachers*	Fully Licensed Teachers	Classes Taught by Highly Qualified Teachers	Teachers with Advanced Degrees	National Board Certified Teachers*	Years of Teaching Experience			Teacher Turnover Rate
						0-3 years	4-10 years	10+ years	
Our School	55	100%	98%	31%	6	22%	31%	47%	13%
District	49	99%	100%	30%	5	25%	33%	42%	22%
State	37	97%	99%	26%	4	24%	29%	48%	21%

* The total number of teachers in this school and the average number of teachers in schools with similar grade ranges at the district and state level.

Becoming involved in your child's school is one way to guarantee success in the classroom. Working together, we can create superior schools for all children.

Michael F. Easley,
Governor, State of North Carolina