



Heritage Elementary

Scarlett Bryant, Principal
 3500 Rogers Road
 Wake Forest, NC 27587 0000
 (919) 562-6000

 Grades K-5
 Magnet School
 Year-Round Calendar

 Wake County Schools

HIGH STUDENT PERFORMANCE

Performance of Students in Each Grade on the ABCs End-of-Grade Tests

Percentage of Students' Scores At or Above Grade Level

| | Grade 3 | | Grade 4 | | Grade 5 | | OVERALL | |
|-------------------|---------|------|---------|------|---------|------|---------|------|
| | Reading | Math | Reading | Math | Reading | Math | Reading | Math |
| Our School | 84.3 | 80.6 | 91.2 | 78.9 | 93.2 | 81.8 | 90.0 | 80.5 |
| District | 86.7 | 78.3 | 89.9 | 77.6 | 92.6 | 75.5 | 89.7 | 75.3 |
| State | 81.8 | 70.8 | 85.2 | 67.7 | 89.3 | 66.7 | 85.5 | 66.4 |

N/A = 5 or fewer students

Performance of Each Student Group on the ABCs End-of-Grade Tests

Percentage of Students, Grouped by Gender, Ethnicity, and Other Factors, Who Passed BOTH the Reading and Math Tests

| | Male | Female | White | Black | Hispanic | Amer. Indian | Asian Pacific Islander | Multi-Racial | E.D. | N.E.D. | L.E.P. | Migrant Students | Students with Disabilities |
|-------------------------|------|--------|-------|-------|----------|--------------|------------------------|--------------|------|--------|--------|------------------|----------------------------|
| Our School | 78.4 | 78.8 | 91.7 | 49.2 | 59.1 | N/A | 91.7 | 88.2 | 51.1 | 89.8 | 57.9 | N/A | 49.3 |
| # of tests taken | 241 | 240 | 300 | 130 | 22 | 0 | 12 | 17 | 139 | 342 | 19 | 0 | 67 |
| District | 72.4 | 74.5 | 87.9 | 48.5 | 54.5 | 71.1 | 91.8 | 73.4 | 48.1 | 84.7 | 41.3 | N/A | 42.9 |
| State | 62.7 | 65.2 | 75.9 | 43.5 | 52.5 | 50.5 | 81.1 | 64.7 | 48.5 | 77.2 | 38.3 | N/A | 33.7 |

E.D. = Economically Disadvantaged
 N/A = 5 or fewer students

N.E.D. = Not Economically Disadvantaged

L.E.P. = Limited English Proficiency

SCHOOL PROFILE

School Size

The total number of students in this school and the average number of students in schools with similar grade ranges at the district and state levels.

| | OUR SCHOOL | DISTRICT | STATE |
|--|------------|----------|-------|
| | 966 | 676 | 510 |

Average Class Size

The average number of students enrolled in a "typical" K-8 classroom.

| | OUR SCHOOL | DISTRICT | STATE |
|--------------|------------|----------|-------|
| Kindergarten | 22 | 21 | 19 |
| Grade 1 | 22 | 21 | 19 |
| Grade 2 | 22 | 21 | 19 |
| Grade 3 | 23 | 21 | 19 |
| Grade 4 | 23 | 22 | 20 |
| Grade 5 | 24 | 22 | 21 |

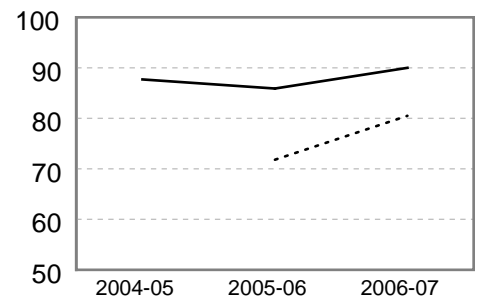
Percentage of Students Promoted at Each Gateway

NC students are required to meet state-wide standards for promotion in grades 3, 5, and 8. These gateways are designed to ensure that students are working at grade level before being promoted to the next grade.

| | GRADE 3 | GRADE 5 | GRADE 8 |
|-------------------|---------|---------|---------|
| Our School | N/A | N/A | N/A |
| District | N/A | N/A | N/A |
| State | N/A | N/A | N/A |

Three Year Trend of Student Performance on the ABCs End-of-Grade Reading and Math Tests

Percentage of students at or above grade level for the past three years.



— Reading - - - - Math

* A multi-year trend for math is only available beginning in 2005-06 because of new tests based on the revised Standard Course of Study.

SAFE, ORDERLY AND CARING SCHOOLS

School Safety

The number of acts of crime or violence reported below includes all acts occurring in school, at a bus stop, on a school bus, on school grounds or during off-campus, school-sponsored activities.

Out of 966 students in our school, there were a total of 0 act[s] of crime or violence.

The number of acts of crime or violence reported per 100 students:

| | |
|-------------------|---|
| OUR SCHOOL | 0 |
| DISTRICT | 1 |
| STATE | 1 |

Access to Technology

Percentage of classrooms connected to the Internet



Keeping you informed

More information about your school is available on the NC School Report Cards Web site at: <http://www.ncreportcards.org>

HIGH STUDENT PERFORMANCE, CONTINUED

School Performance

Each year, schools in North Carolina may receive several designations based on their performance on the state's ABCs tests. These designations are awarded on the basis of the percentage of students performing at grade level and on whether students have learned as much as they are expected to learn in one year. The designations earned by your school are displayed below, followed by a brief description of each designation.

Our School's Designation(s): School of Distinction, Expected Growth

| DESIGNATION | PERFORMANCE: STUDENTS PERFORMING AT GRADE LEVEL | GROWTH: LEARNING ACHIEVED IN ONE YEAR | | | PERCENT OF SCHOOLS WITH DESIGNATION | |
|----------------------------|--|---|-----------------|------------------------------|--|-------|
| | | High Growth | Expected Growth | Expected Growth Not Achieved | DISTRICT | STATE |
| HONOR SCHOOL OF EXCELLENCE | At least 90% of students at grade level and the school made adequate yearly progress (AYP) | | | | 9 | 5 |
| SCHOOL OF EXCELLENCE | At least 90% of students at grade level | | | | 1 | 0 |
| SCHOOL OF DISTINCTION | At least 80% of students at grade level | | ✓ | | 44 | 24 |
| SCHOOL OF PROGRESS | At least 60% of students at grade level | | | | 31 | 37 |
| NO RECOGNITION | 60 to 100% of students at grade level | | | | 14 | 22 |
| PRIORITY SCHOOL | 50 to 60% of students at grade level, OR Less than 50% of students at grade level | | | | 1 | 11 |
| LOW PERFORMING | Less than 50% of students at grade level | | | | 0 | 1 |

Adequate Yearly Progress (AYP) Results

North Carolina has set target goals that schools must meet to make Adequate Yearly Progress (AYP) under the federal No Child Left Behind act.

Our school did not make adequate yearly progress.
Our school met 20 out of 21 AYP targets.

In any group where the percentage of students at a grade level is greater than 95% or less than 5%, the actual values may not be displayed because of federal privacy regulations. In these cases the results will be shown as >95% or <5% for the group.

QUALITY TEACHERS

| | Total Number of Classroom Teachers* | Fully Licensed Teachers | Classes Taught by Highly Qualified Teachers | Teachers with Advanced Degrees | National Board Certified Teachers* | Years of Teaching Experience | | | Teacher Turnover Rate |
|-------------------|-------------------------------------|-------------------------|---|--------------------------------|------------------------------------|------------------------------|------------|-----------|-----------------------|
| | | | | | | 0-3 years | 4-10 years | 10+ years | |
| Our School | 62 | 100% | 100% | 19% | 10 | 19% | 47% | 34% | 28% |
| District | 49 | 99% | 100% | 30% | 5 | 25% | 33% | 42% | 22% |
| State | 37 | 97% | 99% | 26% | 4 | 24% | 29% | 48% | 21% |

* The total number of teachers in this school and the average number of teachers in schools with similar grade ranges at the district and state level.

Becoming involved in your child's school is one way to guarantee success in the classroom. Working together, we can create superior schools for all children.

Michael F. Easley,
Governor, State of North Carolina